

# JEFFERSON SCHOOL DISTRICT

## Establishment of By-Trustee Area Voting

November 16,  
2023

Shalice Tilton, Senior Consultant  
National Demographics Corporation

# Election Systems

---

1. “At Large”
2. “From Trustee Area” or “Residence” Trustee Area
3. “By Trustee Area”

**The California Voting Rights Act  
was written to specifically  
encourage by-Trustee Area  
elections.**

# California Voting Rights Act (CVRA)

---

- ❑ Under the Federal Voting Rights Act (passed in 1965), a jurisdiction must fail 4 factual tests before it is in violation of the law.
- ❑ The California VRA makes it significantly easier for plaintiffs to force jurisdictions into “by-district” election systems by eliminating two of the US Supreme Court Gingles tests:
  - ~~❑ Can the protected class constitute the majority of a district?~~
  - ❑ Does the protected class vote as a bloc?
  - ❑ Do the voters who are not in the protected class vote in a bloc to defeat the preferred candidates of the protected class?
  - ~~❑ Do the “totality of circumstances” indicate race is a factor in elections?~~
- ❑ Liability is now established by just the presence of racially polarized voting and dilution of the protected class’s voting strength.

# CVRA Impact

---

- ❑ **Switched (or in the process of switching) as a result of CVRA:**
  - ❑ At least 275 school districts
  - ❑ 36 Community College Districts
  - ❑ 191 cities
  - ❑ 1 County Board of Supervisors
  - ❑ 53 water and other special districts.
- ❑ **Palmdale, Santa Clara and Santa Monica fought “on the merits.” All lost.**
  - ❑ Santa Monica: CA Supreme Court referred case back to Court of Appeals
  - ❑ Palmdale spent about \$1.8 million, Santa Clara about \$800,000, and Santa Monica between \$5 and \$8 million, just on their defense.
  - ❑ Santa Monica plaintiffs requested \$22 million
  - ❑ No jurisdiction has won a case.
- ❑ **Key settlements:**
  - ❑ Palmdale: \$4.7 million
  - ❑ Modesto: \$3 million
  - ❑ Highland: \$1.3 million
  - ❑ Anaheim: \$1.1 million
  - ❑ Whittier: \$1 million
  - ❑ Santa Barbara: \$600,000
  - ❑ Tulare Hospital: \$500,000
  - ❑ Camarillo: \$233,000
  - ❑ Compton Unified: \$200,000
  - ❑ Madera Unified: about \$170,000
  - ❑ Hanford Joint Union Schools: \$118,000
  - ❑ Merced City: \$42,000
- ❑ **An estimated \$16 million in total settlements and court awards so far.**

# Districting Process

---

Step	Description
<b>Hearings 1 &amp; 2</b> November 16 & 20	<ul style="list-style-type: none"><li>• Held prior to release of draft maps</li><li>• Education and to solicit input on the composition of Trustee Areas</li></ul>
<b>Release draft maps</b> <i>November 20</i>	<ul style="list-style-type: none"><li>• Must be posted on the project website seven (7) days in advance of Hearings 3-5</li></ul>
<b>Hearing 3</b> November 30	<ul style="list-style-type: none"><li>• First Board consideration of draft maps</li></ul>
<b>Hearing 4</b> December 14	<ul style="list-style-type: none"><li>• Board consideration of draft maps</li></ul>
<b>Hearing 5/Map Adoption</b> December 14	<ul style="list-style-type: none"><li>• Public hearing followed by map adoption</li></ul>
<b>County Committee</b> December 15-22*	<ul style="list-style-type: none"><li>• San Joaquin County Committee on School District</li></ul> <i>*actual date to be determined</i>

# Redistricting Rules and Goals

## Federal Laws

- Equal Population
- Federal Voting Rights Act
- No Racial Gerrymandering

## Traditional Redistricting Principles

- Communities of interest
- Compact
- Contiguous
- Visible (Natural & man-made) boundaries
- Respect voters' choices / continuity in office
- Planned future growth

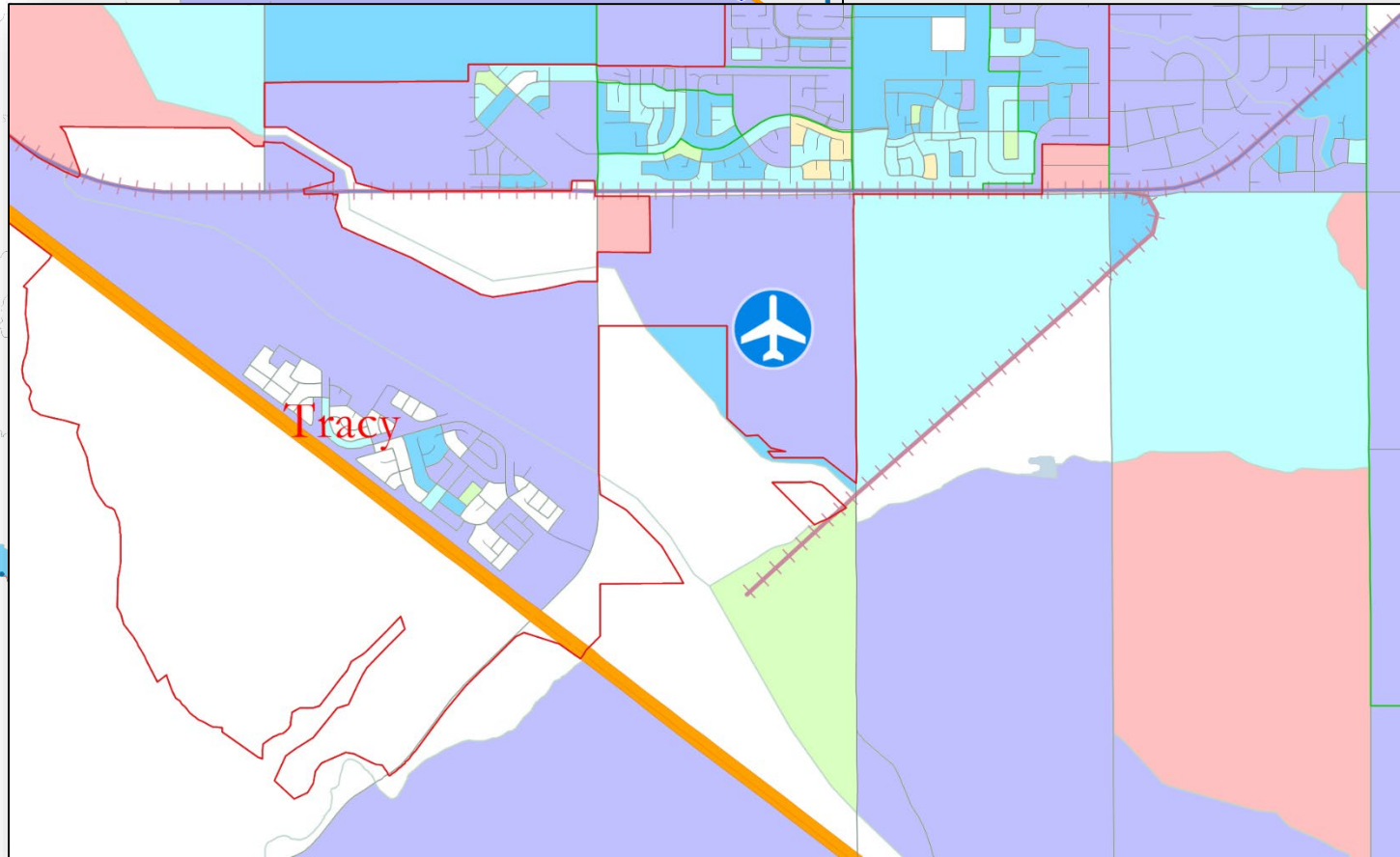
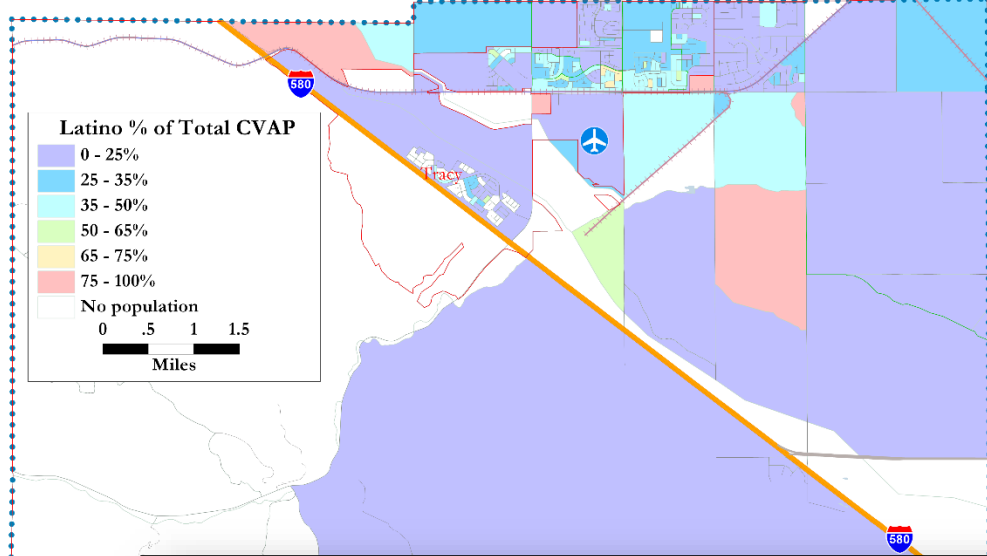


# Demographic Summary

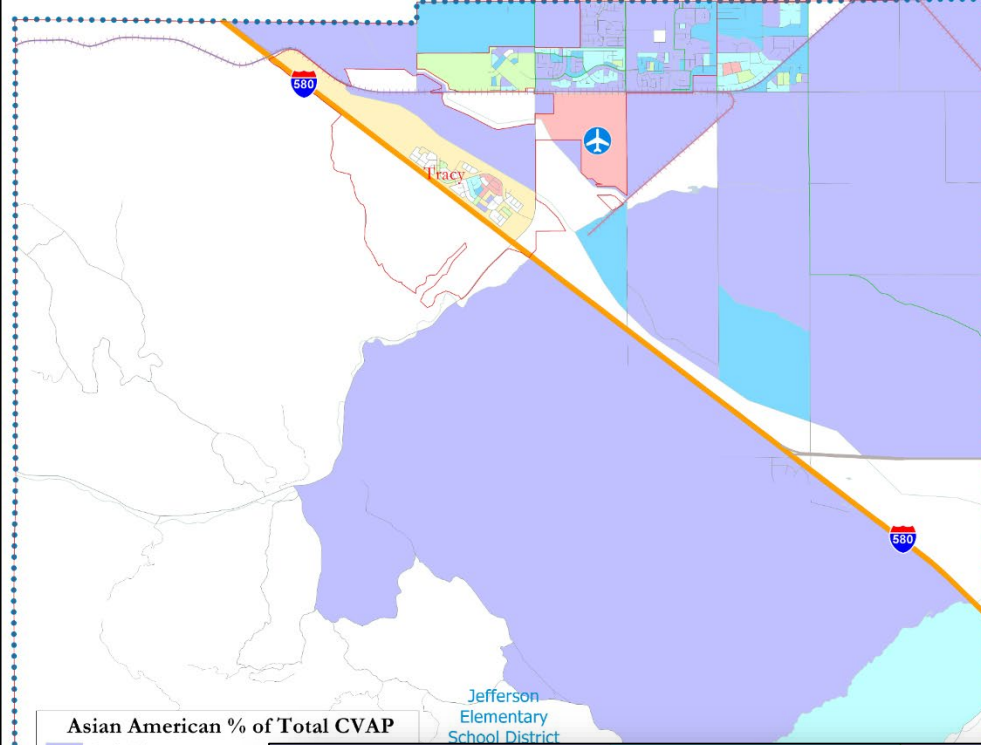
Each of the five trustee areas must contain about 3,328 people.

Category	Field	Total	Category	Field	Total
2020 Census	Total Population	16,638	Age	age0-19	31%
Total Pop.	Hispanic/Latino	29%		age20-60	54%
	NH White	32%		age60plus	15%
	NH Black	7%	Immigration	immigrants	22%
	NH Asian/Pac Isl.	28%		naturalized	69%
	NH Native Amer.	1%	Language spoken at home	english	66%
Citizen Voting Age Pop	Total	11,134		spanish	14%
	Hisp	25%		asian-lang	8%
	NH White	38%		other lang	12%
	NH Black	7%	Language Fluency	Speaks Eng. "Less than Very Well"	12%
	Asian/Pac Isl.	27%		hs-grad	60%
	Native Amer.	2%	Education (among those age 25+)	bachelor	22%
Voter Registration (Nov 2022)	Total	10,659		graduatedegree	7%
	Latino est.	26%	Child in Household	child-under18	52%
	Spanish-Surnamed	23%	Pct of Pop. Age 16+	employed	67%
	Asian-Surnamed	13%	Household Income	income 0-25k	9%
	Filipino-Surnamed	4%		income 25-50k	3%
	NH White est.	47%		income 50-75k	7%
Voter Turnout (Nov 2022)	NH Black	9%		income 75-200k	57%
	Total	5,327		income 200k-plus	24%
	Latino est.	21%	Housing Stats	single family	94%
	Spanish-Surnamed	19%		multi-family	6%
	Asian-Surnamed	12%		rented	25%
	Filipino-Surnamed	4%		owned	75%
Voter Turnout (Nov 2020)	NH White est.	52%	Total population data from California's adjusted 2020 Census data. Citizen Voting Age Population, Age, Immigration, and other demographics from the 2017-2021 American Community Survey and Special Tabulation 5-year data. Turnout and Registration data from California Statewide Database. "Latino" figures calculated by NDC using Census Bureau's Latino undercount by surname estimate.		
	NH Black	9%			
	Total	8,049			
	Latino est.	24%			
	Spanish-Surnamed	22%			
	Asian-Surnamed	10%			
	Filipino-Surnamed	3%			
	NH White est.	54%			
	NH Black est.	9%			

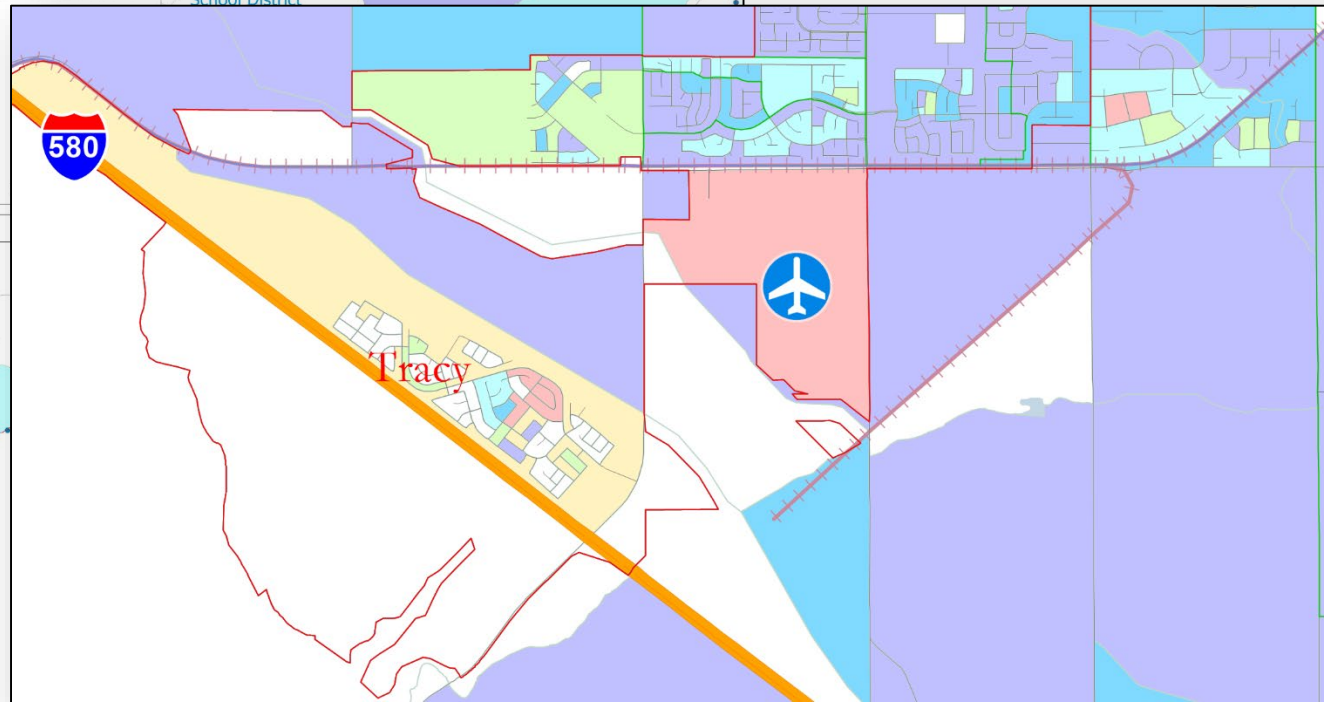
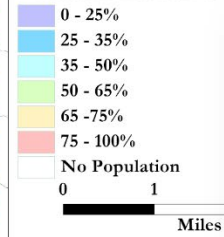
# Latino CVAP



# Asian CVAP



Asian American % of Total CVAP



# Defining Neighborhoods

---

**1<sup>st</sup> Question: What is your neighborhood?**

**2<sup>nd</sup> Question: What are its geographic boundaries?**

**Examples of physical features defining a neighborhood boundary:**

- Natural neighborhood dividing lines, such as highway or major roads, rivers, canals and/or hills
- Areas around parks or schools
- School attendance zones
- Other neighborhood landmarks

**In the absence of public testimony, planning records and other similar documents may provide definition.**



# Public Hearing & Discussion

---

- What is your community of interest and what are its boundaries?
- Would you prefer your community of interest be in one trustee area or that it have multiple representatives on the Board?